

MONTHLY MEMBERSHIP PROGRESS REPORT

LOCATION MASSACHUSETTS

District 33 S

Results as of: 6/30/2023

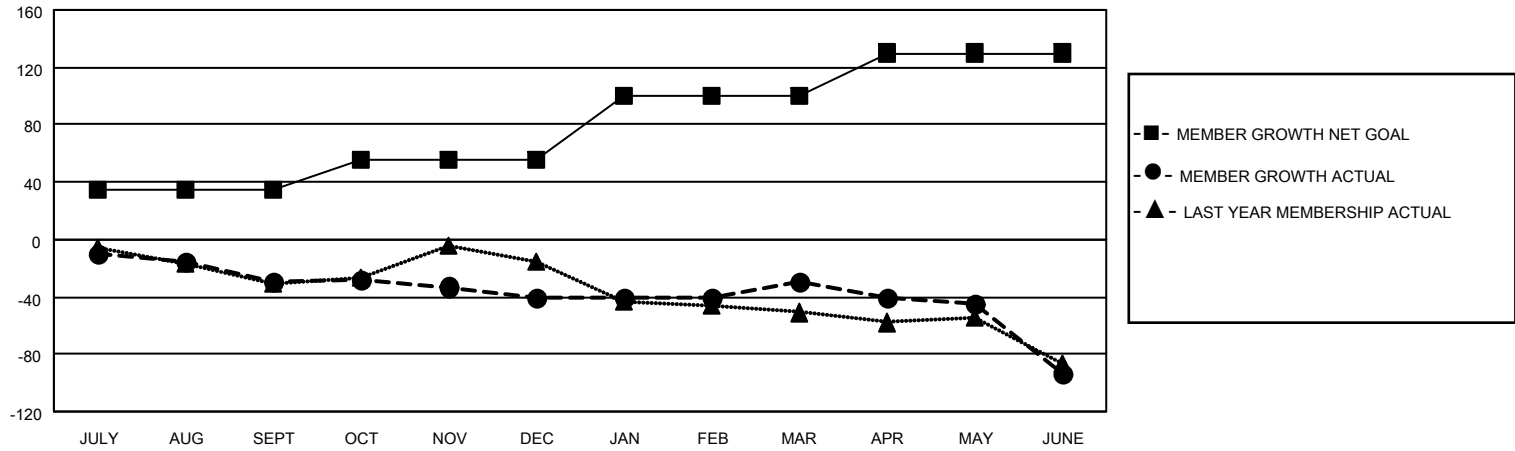
Clubs			
RESULTS FOR 2022-2023			
QUARTER	NEW CLUB GOAL	NEW CLUBS	DROPPED CLUBS
JULY/AUG/SEPT	0	0	0
OCT/NOV/DEC	1	0	0
JAN/FEB/MAR	0	0	0
APR/MAY/JUNE	1	0	1

Members			
RESULTS FOR 2022-2023			
QUARTER	MEMBER GROWTH NET GOAL	MEMBER GROWTH ACTUAL	DROPPED MEMBERS ACTUAL (including transfers)
JULY/AUG/SEPT	35	22	46
OCT/NOV/DEC	20	36	44
JAN/FEB/MAR	45	36	19
APR/MAY/JUNE	30	46	94

GOALS AND ACTUAL NEW CLUBS CUMULATIVE



GOALS AND ACTUAL MEMBERS CUMULATIVE



DROPPED CLUBS: 1	
DROPPED MEMBERS	
DECEASED	37
CLUB CANCELLED	0
OTHER	165
TOTAL	202

24 CLUBS OF 48 ADDED 1 OR MORE NEW MEMBERS

[CLICK HERE FOR CUMULATIVE MEMBERSHIP DATA](#)

<u>GENDER DISTRIBUTION</u>	
MALE	903 (61.26%)
FEMALE	570 (38.67%)
NON BINARY	0 (0.00%)
PREFER NOT TO ANSWER	1 (0.07%)
TOTAL FAMILY UNIT MEMBERS	
	230
FAMILY MEMBERS PAYING HALF DUES	
	117